



Ponts
JACQUES CARTIER +
CHAMPLAIN
Bridges
Canada

Jacques Cartier Bicycle Path Network Advisory Committee

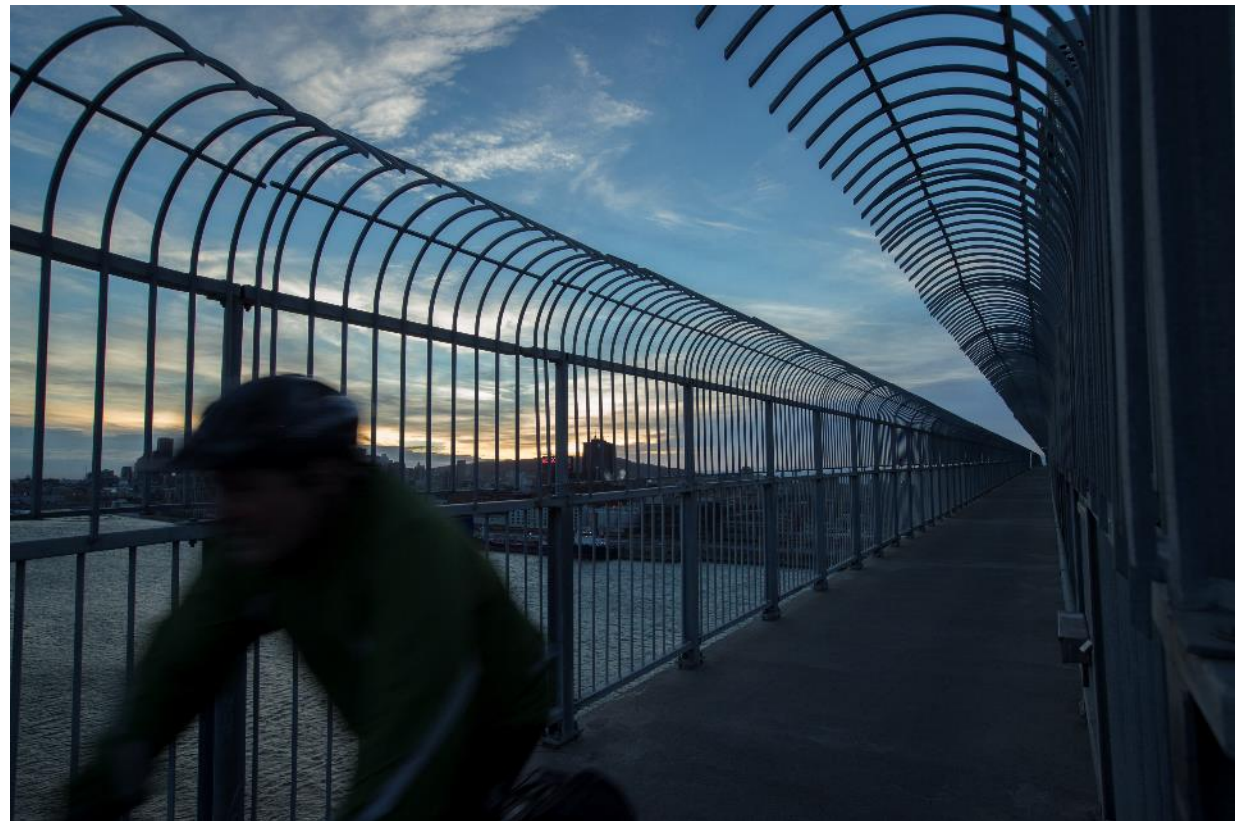


III Advisory Committee



Goal

- + Formalize and structure discussions about the Jacques Cartier Bridge bicycle path network with cyclist groups and partners
- + Track current issues and projects on a quarterly basis
- + Help promote active transportation with paths that are safe, accessible and user-friendly



Advisory Committee



Current composition

- + Association des piétons et cyclistes du pont Jacques-Cartier
- + Coalition vélo de Montréal
- + Collectif transport actif Rive-Sud
- + Vélo Québec
- + Société du parc Jean-Drapeau
- + Sûreté du Québec
- + Ville de Montréal
- + Ville de Longueuil
- + The Jacques Cartier and Champlain Bridges Incorporated
(planning, projects, operation/maintenance, communications)





Jacques Cartier Pedestrian and Bicycle Path Network

Territory, sections and markers



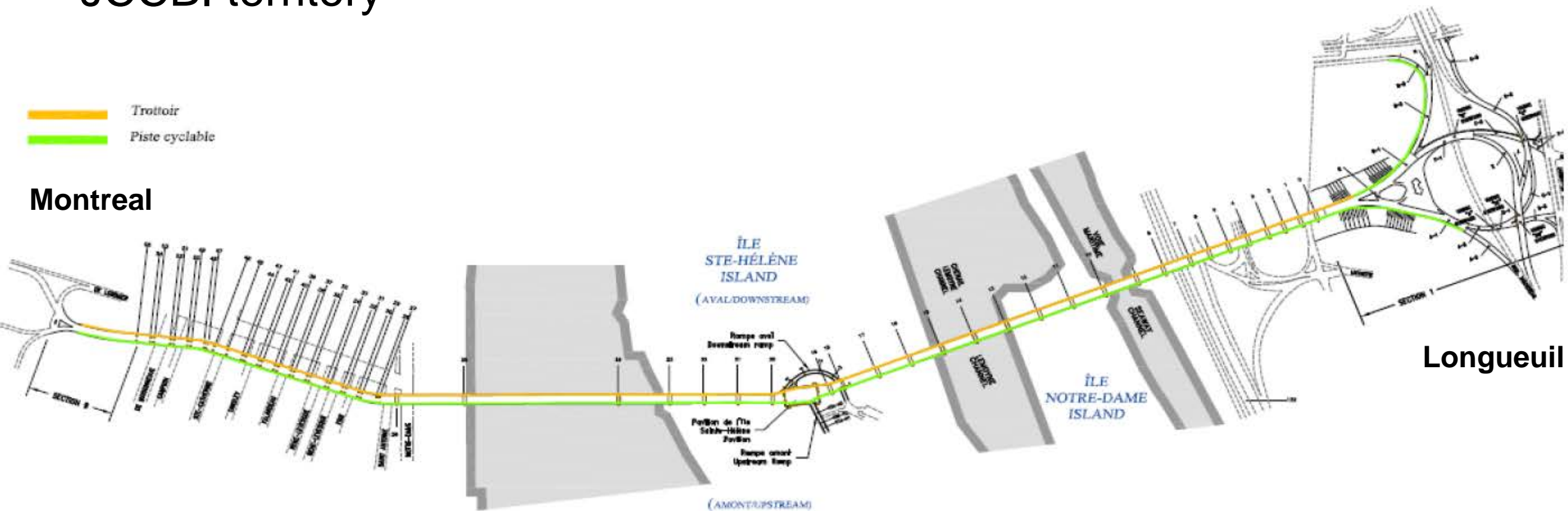
III Pedestrian and bicycle path network



JCCBI territory

-  Trottoir
-  Piste cyclable

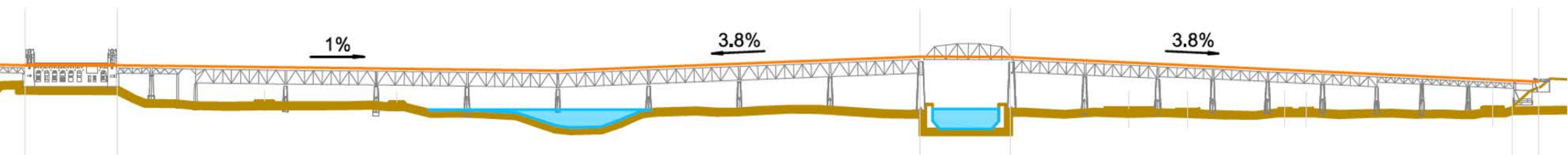
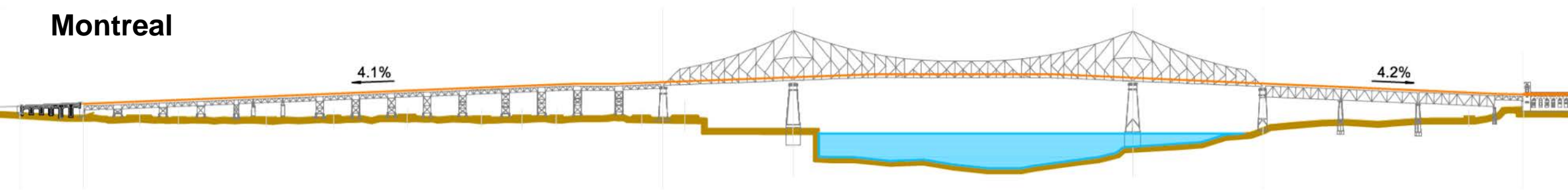
Montreal



III Path characteristics



Montreal



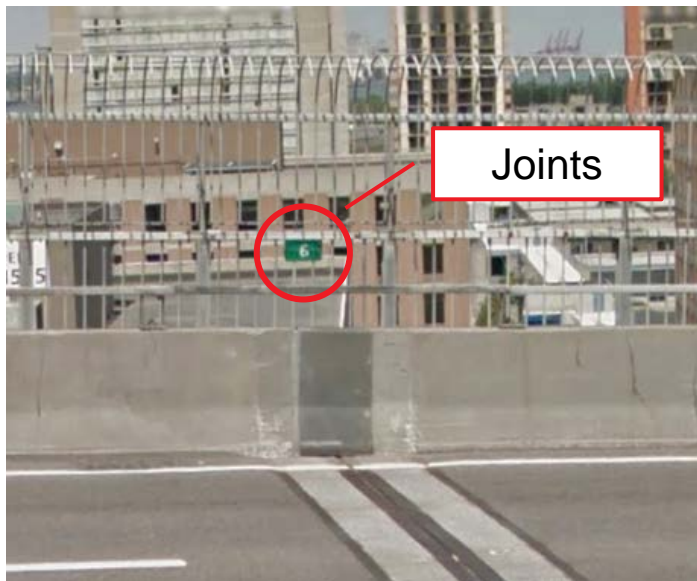
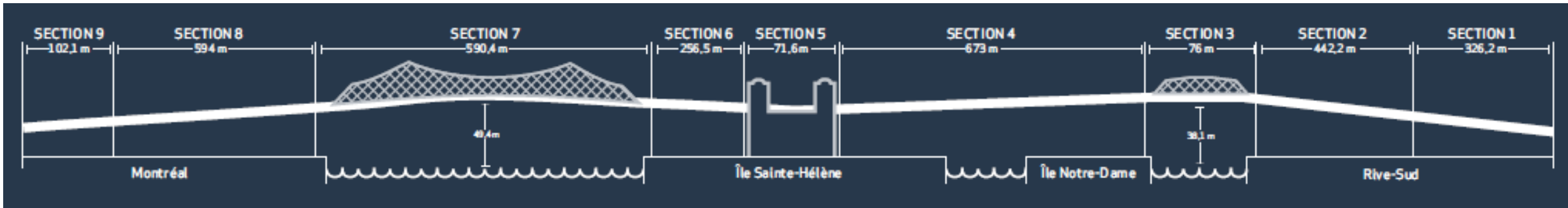
Longueuil



III Pedestrian and bicycle path network



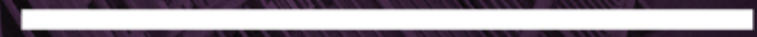
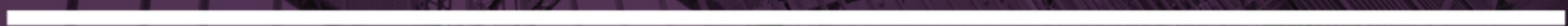
Sections and markers





Work and projects

Improvements to the pedestrian and bicycle path network





Improvements resulting from committee discussions

- + The contractors have been asked to pay particular attention to signs for pedestrians and cyclists at work areas
- + Advance warning signs have been ordered to reinforce the “Yield” message in chicane areas
- + The chicane near the Île Sainte-Hélène pavilion has been widened
- + The stop sign for vehicles coming from Île Sainte-Hélène has been moved up
- + We are currently evaluating solutions to better direct pedestrians and cyclists at the Île Sainte-Hélène exit



III Replacement of guard rails



+ Goal

- Secure the bicycle path and sidewalk for users
- Allow for snow removal on the network

+ Work types

- Replacing and securing 526 guard rails
- Installing protective plates on the guard rails and steel tracks over sharp edges
- Major safety issues during the work – complete removal of certain sections

+ Schedule overview

- Work to secure guard rails (winter to summer 2018)
- Work optimized at night and during the winter closure



III Pilot winter maintenance project



Pilot winter maintenance project

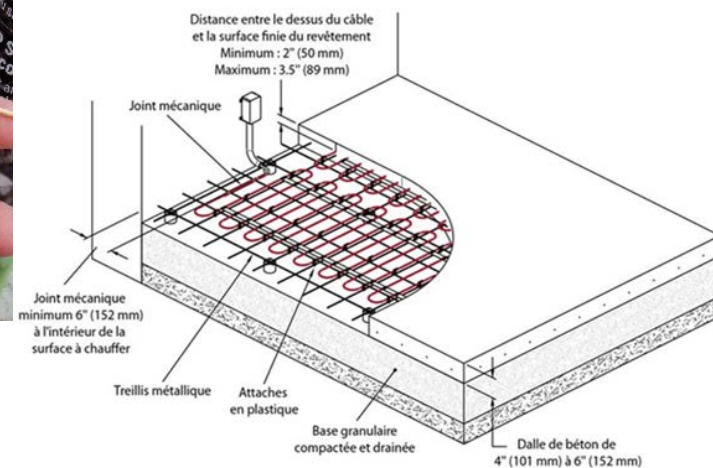
- + Mechanical maintenance between Longueuil and Île Sainte-Hélène
 - Work on the guard rails will be coordinated
- + Analysis of performance of a heated surface system
- + Analysis of deicing products
- + Testing of equipment to protect against ice falling on the path



Example of heated surface



Revêtement de béton



Cross-section of heating cables



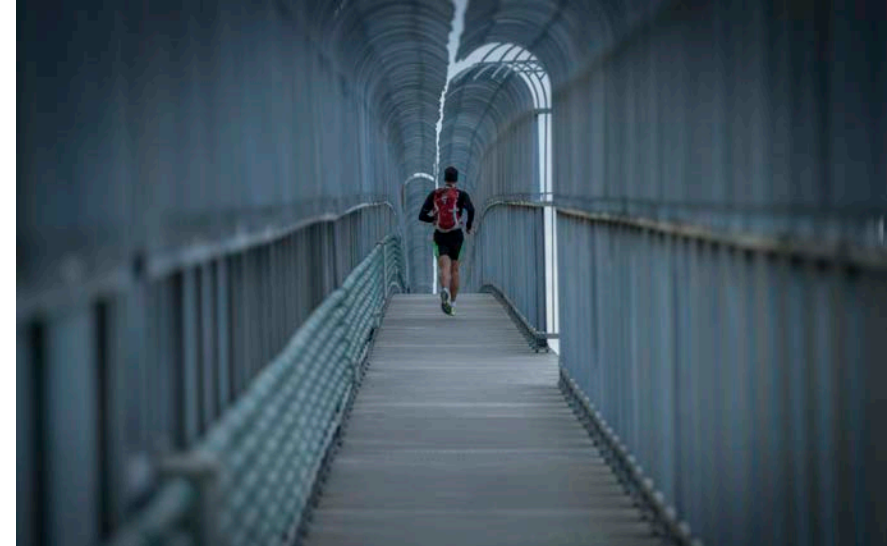
General information



Contact

- + Complaints and suggestions:
communications@pjcci.ca
or via Twitter @pontJCBridge

Quarterly meetings





Participez à la conversation / Join the conversation

JacquesCartierChamplain.ca

Twitter | LinkedIn | Facebook | YouTube

