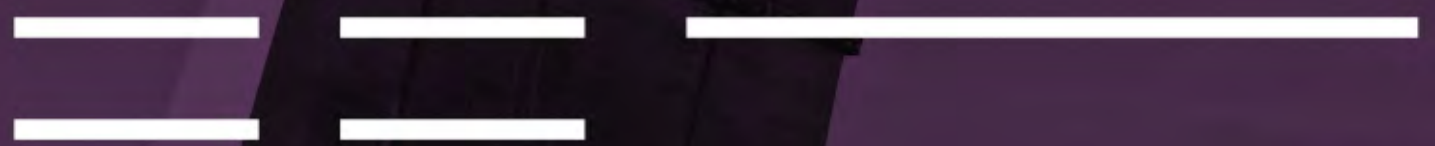




Jacques Cartier Bridge Bicycle Path

Advisory Committee

March 27, 2019



Agenda



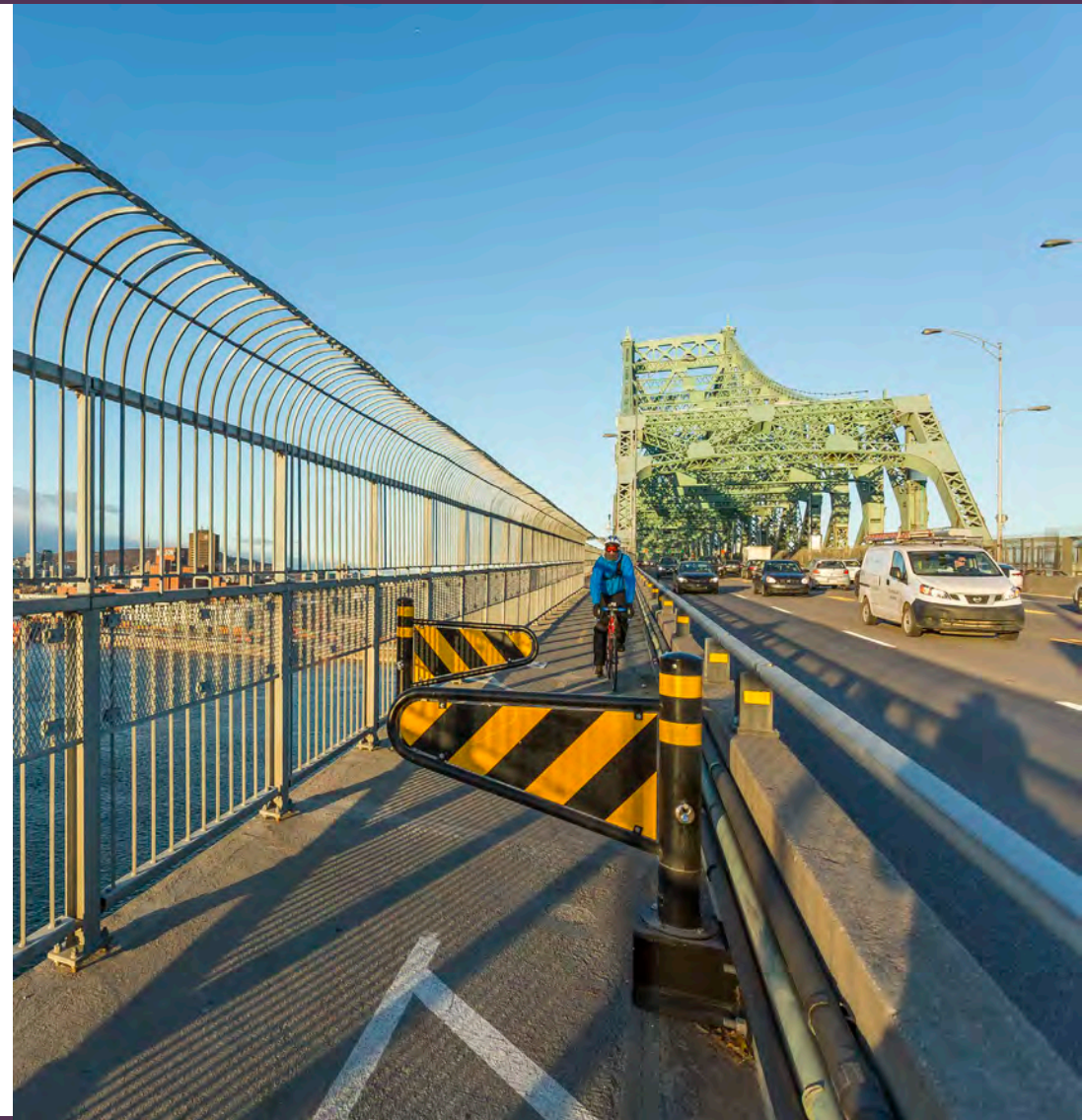
- + Call to order
- + Seasonal opening of the network
- + New signage
- + Major work in 2019
- + Next meeting





Review of goals

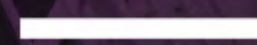
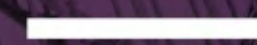
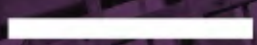
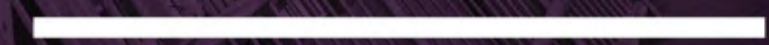
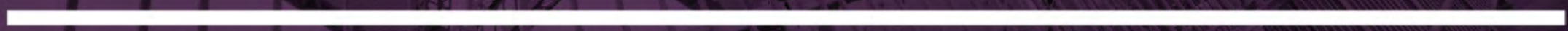
- + Formalize and structure discussions about the Jacques Cartier Bridge bicycle path network with user groups and partners
- + Track current issues and projects on a quarterly basis
- + Help promote active transportation with paths that are safe, accessible and user-friendly





Seasonal opening

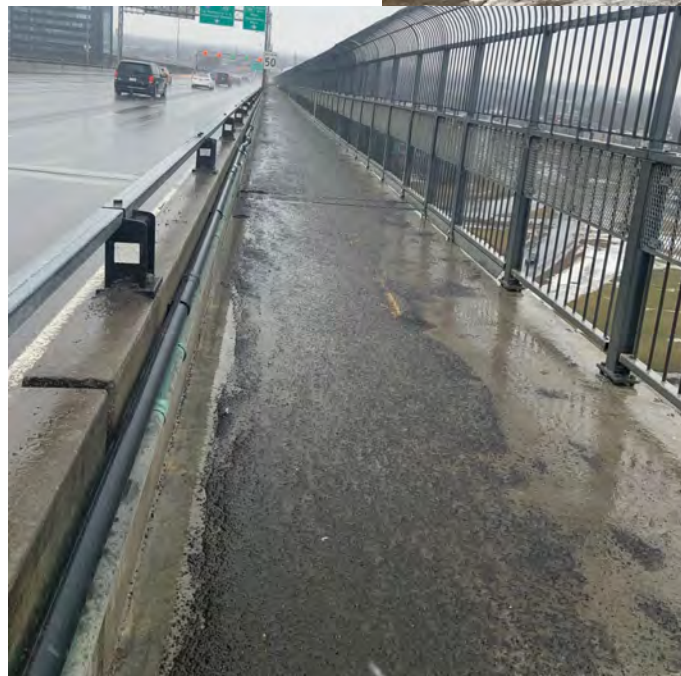
Of the bicycle and pedestrian network



Seasonal opening



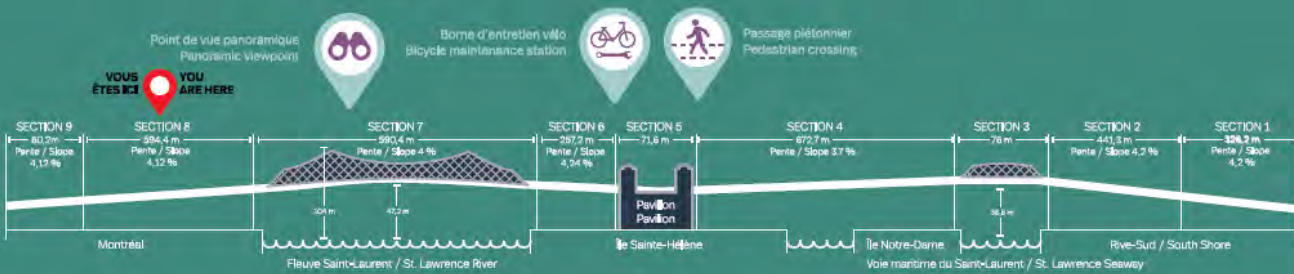
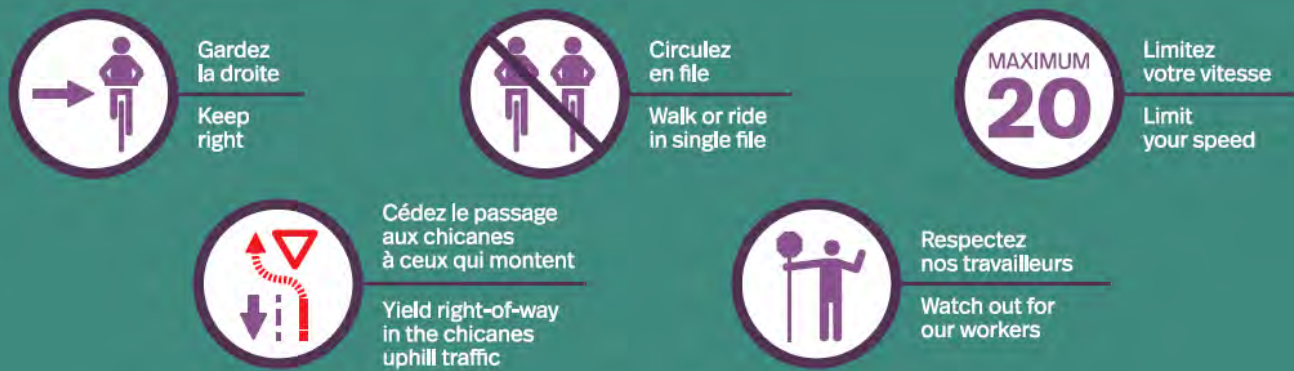
- + Seasonal opening 2019
 - Snow removal
 - Spring maintenance
 - New signage
- + Envisaged opening date



III New signage (multipurpose path)



Piste multifonctionnelle PONT JACQUES CARTIER BRIDGE Multipurpose Path



Parcours multimédia
Des histoires et des ponts
À découvrir avec l'application gratuite
Montréal en histoires

Stories and Bridges multimedia tour
Discover the tour with the free Montréal en histoires app

Restez à l'affût
en consultant la page piétons et cyclistes

Get the latest information by consulting
our Pedestrians and Cyclists web page

Abonnez-vous / Sign up
@pontJCbridge
alertes courriel / email list
SMS / text alerts
JacquesCartierChamplain.ca

- + New signs at the bridge approaches and at the Île Sainte-Hélène pavilion
- + Safe conduct on the multipurpose path and sidewalk
- + Stop at the intersections
- + Security and maintenance station
- + Subscription to our alert tools
- + Watch out for our workers
- + Multimedia tour



III New signage (sidewalk)



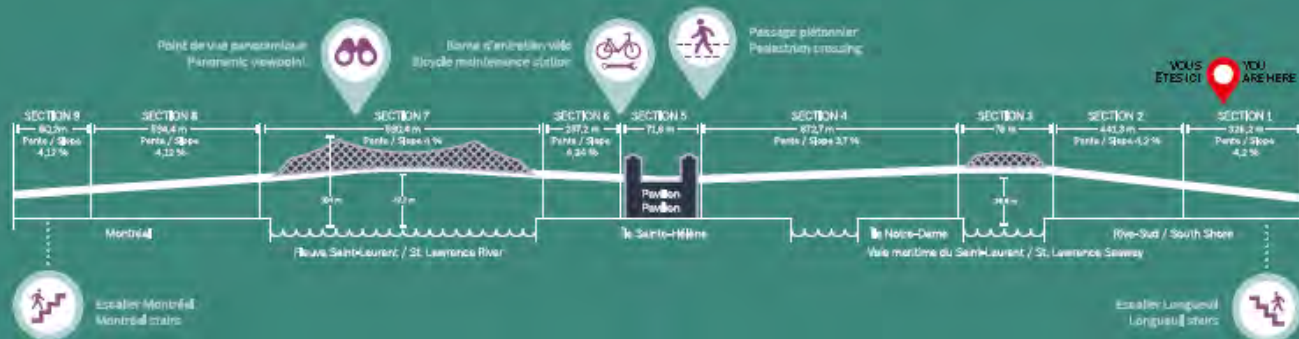
Trottoir du PONT JACQUES-CARTIER BRIDGE Sidewalk



Arrêtez aux
intersections
Stop at the
intersections



Respectez
nos travailleurs
Watch out for
our workers






 **Parcours multimédia
Des histoires et des ponts**
À télécharger sur l'application gratuite
Montréal en histoires

**Stories and Bridges
multimedia tour**
Discover the tour with the free Montréal en histoires app

**Restez à l'affût
en consultant la page piétons et cyclistes**

**Get the latest information by consulting
our Pedestrians and Cyclists web page**

Abonnez-vous / Sign up

-  @pontUCBridge
-  alertes courriel / email list
-  SMS / text alerts

JacquesCartierChamplain.ca

- + New signs at the bridge approaches and at the Île Sainte-Hélène pavilion
- + Safe conduct on the multipurpose path and sidewalk
- + Stop at the intersections
- + Security and maintenance station
- + Subscription to our alert tools
- + Watch out for our workers
- + Multimedia tour

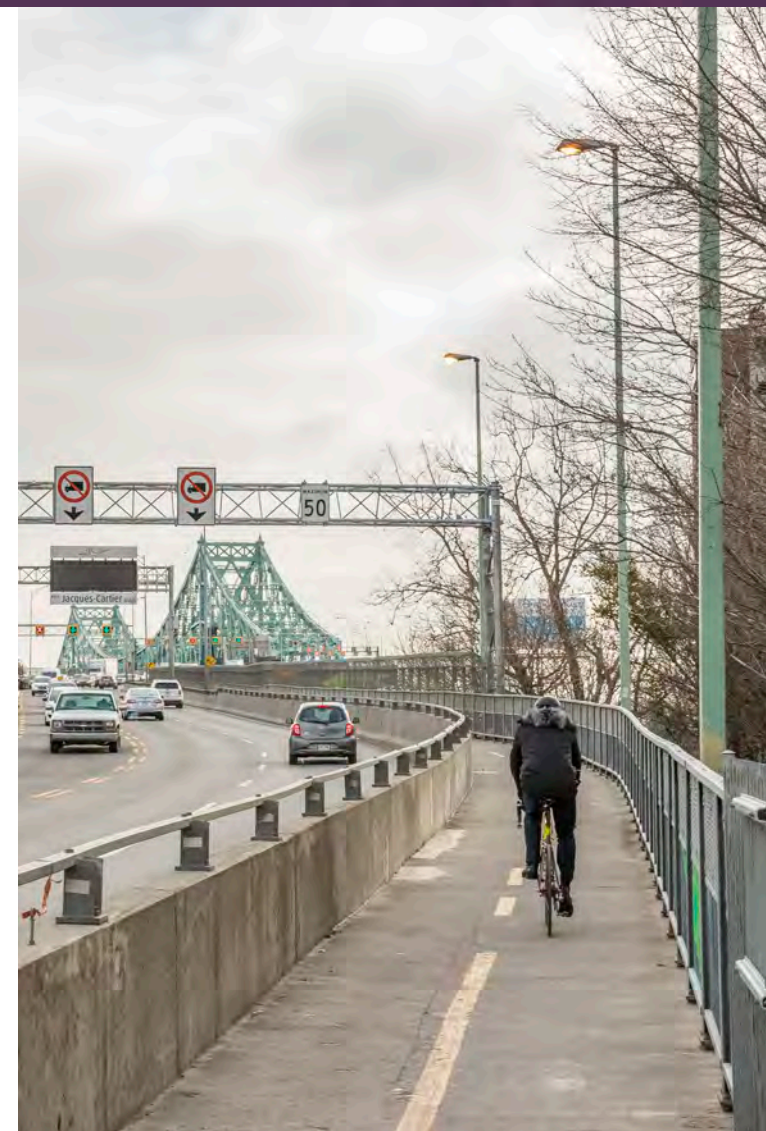


III New signage



Routing signaling

- + Installation of new signs at the bridge approaches and at the Île Sainte-Hélène pavilion (Spring-Summer 2019)



Winter operation



- + As announced in October 2018, JCCBI cannot operate the cycling network during the winter in the current conditions
- + JCCBI is evaluating different options, some of which may require significant work and investment
- + 3 complementary studies are being conducted:
 - Weather trends: JCCBI is using weather data over the past 5 years to compare and analyze variances between forecasts and observed weather
 - Alternatives to de-icing salts: Find alternatives that are less harmful for the infrastructure over the long term
 - Falling ice: Better understand the risks of falling ice to find solutions to minimize these risks



Partners



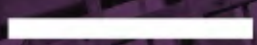
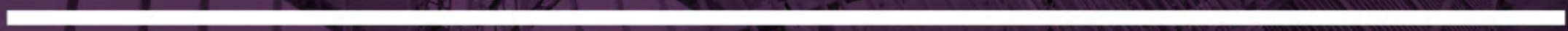
- + Discussions are ongoing and will continue with our partners for the following three sectors:
 - Jacques Cartier Sector
 - Cities of Longueuil, Saint-Lambert, Montréal
 - Parc Jean-Drapeau
 - St. Lawrence Seaway
 - RTL and STM
- + Champlain Bridge Sector
 - Signature on the St. Lawrence
 - Vélo Québec
- + Honoré Mercier Sector
 - MTQ
 - Nearby cities
 - Parks Canada
- + JCCBI would like to reinstate the RTL shuttle for winter 2019-2020 to let cyclists cross the Jacques Cartier Bridge with their bicycles throughout the winter season





Major Work in 2019

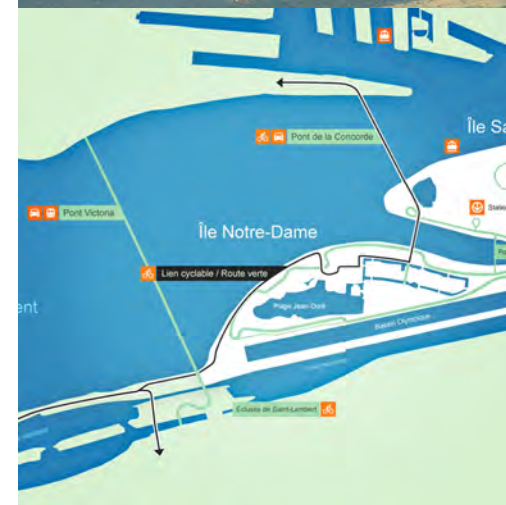
Impacts on the network



Work on the Parc J-D access ramp



- + Impacts on bicycle and pedestrian network
- + From March 17 to April 30: excavation and repair work on the Parc Jean-Drapeau access ramp toward the South Shore
- + Impacts for pedestrians and cyclists:
 - Complete closure of the access ramp
 - Impacts on the multipurpose path
 - Multipurpose path will be accessible after the opening date, but no access to Parc J-Drapeau
 - Access to Parc J-Drapeau through the Saint-Lambert locks
 - No access to the Parc J-Drapeau via the access ramp toward Montréal



Work on the Jacques Cartier Bridge



- + Spring, summer and fall 2019 – Painting, repaving and steel work
- + A lane for bicycles and pedestrians will be maintained throughout the work (alternating hindrances on the multipurpose path and sidewalk)
 - Impacts on the multipurpose path:
 - At some areas, the path width will be reduced by one metre over a distance of 100 metres
 - Complete closure of the path between Longueuil and the Île Sainte-Hélène pavilion for one weekend in July (access via the sidewalk)
 - Impacts on the sidewalk
 - Complete closure of the sidewalk between Montréal and the Île Sainte-Hélène pavilion (alternating with the multipurpose path)
- + **Follow us on social media and subscribe to our alert tools**





Ponts
JACQUES CARTIER +
CHAMPLAIN
Bridges
Canada

Next meeting

Fall 2019



Contact us

- + Joëlle-Ann Blanchette
jblanchette@pjcci.ca
450-651-8771, extension 2465
- + Comments and suggestions:
communications@pjcci.ca
or via Twitter @pontJCBridge





Participez à la conversation / Join the conversation

JacquesCartierChamplain.ca

Twitter | LinkedIn | Facebook | YouTube

